

Nederman N series Fans



The N series fan is an important component in Nederman's wide range of quality products for fume extraction and filtering, as well as for vehicle exhaust extraction. A range of fans are available from 0.55 kW to 2.2 kW (0.75 Hp to 3 Hp), both single and three phase.

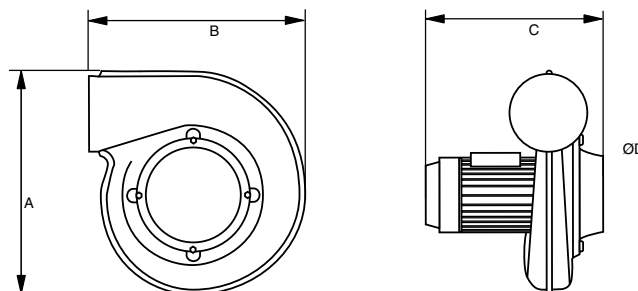
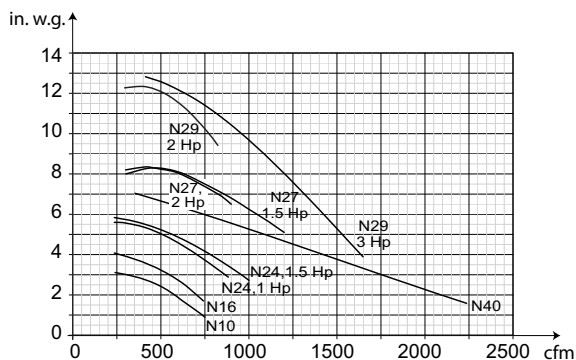
- Simple and powerful



Dimensions				
Fan	A	B	C	D
N10 / N16	478 (18)	457 (18)	321 (13)	160 (6.3)
N24 / N27	478 (18)	457 (18)	341 (13)	160 (6.3)
N40	493 (19)	582 (23)	482 (19)	250 (10)
N29	635 (25)	643 (25)	475 (19)	160 (6.25)

mm (inch)

Pressure drop



Model	Airflow, m ³ /h (cfm)	Voltage, V	Frequency, Hz	Phase	Rated current, A	Power, kW (Hp)	Connection Ø in / out, mm (in.)	Weight, kg	Part no.
N10	1250 (735)	120 / 230	60	1	8.7 / 4.4	0.55 (0.75)	160/160 (6 1/4 / 6 1/4)	14 (30)	14521421
N10	1250 (735)	230 / 460	60	3	2.46 / 1.4	0.55 (0.75)	160/160 (6 1/4 / 6 1/4)	14 (30)	14521721
N16	400-1200 (235-705)	120 / 230	60	1	8.0/4.0	0.55 (0.75)	160/160 (6 1/4 / 6 1/4)	14 (30)	14510321
N16	500-1250 (290-735)	230 / 460	60	3	2.4 / 1.4	0.55 (0.75)	160/160 (6 1/4 / 6 1/4)	14 (30)	14511021
N16	500-1250 (290-735)	575	60	3	1.1	0.55 (0.75)	160 / 160 (6 1/4 / 6 1/4)	14 (30)	14513021
N24	400-1500 (235-880)	120 / 230	60	1	10.0 / 5.0	0.75 (1)	160/160 (6 1/4 / 6 1/4)	17 (38)	14510222
N24	400-1750 (235-1030)	208 / 230 / 460	60	3	3.6 / 3 / 1.8	0.75 (1)	160/160 (6 1/4 / 6 1/4)	17 (38)	14514122
N24	400-1750 (235-1030)	208 / 230 / 460	60	3	4.9 / 4.6 / 2.3	0.9 (1.5)	160/160 (6 1/4 / 6 1/4)	17 (38)	14511022
N24	400-1750 (235-1030)	575	60	3	1.5	0.9 (1.5)	160/160 (6 1/4 / 6 1/4)	17 (38)	14511222
N27	600-3000 (350-1750)	120 / 230	60	1	14.2 / 7.1	0.9 (1.5)	160/160 (6 1/4 / 6 1/4)	17 (38)	14510022
N27	600-3000 (350-1750)	230	60	1	11.6	1.5 (2.0)	160/160 (6 1/4 / 6 1/4)	17 (38)	14514422
N27	600-3000 (350-1750)	208 / 230 / 460	60	3	6.5 / 6.2 / 3.4	1.5 (2.0)	160/160 (6 1/4 / 6 1/4)	17 (38)	14514222
N27	600-3000 (350-1750)	575	60	3	2.2	1.5 (2.0)	160/160 (6 1/4 / 6 1/4)	17 (38)	14514322
N29	500-4000 (290-2350)	208 / 230 / 460	60	3	6.5 / 6.2 / 3.4	1.5 (2.0)	160/160 (6 1/4 / 6 1/4)	32 (70)	14521029
N29	500-2500 (290-1470)	208 / 230 / 460	60	3	8.6 / 7.6 / 3.8	2.2 (3.0)	160/160 (6 1/4 / 6 1/4)	28 (62)	14510929
N29	500-250 (290-1470)	575	60	3	3.1	2.2 (3.0)	160/160 (6 1/4 / 6 1/4)	32 (70)	14522129
N40*	500-3000 (290-1765)	208 / 230 / 460	60	3	8.6 / 7.6 / 3.8	2.2 (3.0)	200/250 (8 / 10)	29 (64)	14510223
N40*	500-3000 (290-1765)	575	60	3	3.1	2.2 (3.0)	200/250 (8 / 10)	29 (64)	14511723

*) Can not be used without connections, max. airflow is 2500 m³/h (1470 cfm)
Models with fan bracket also available.

For further information please contact your local Nederman sales representative.
Also see the Nederman Design & Engineering Guide and www.nederman.com

Product availability may differ by country