

Fans

The N series fans presented in this catalogue are important components in Nederman's products for fume extraction and filtering, as well as for vehicle exhaust extraction. The N fans cover from 0.55 kW to 2.2 kW (0,5 Hp to 3,0 Hp), and have an airflow capacity of 400 - 4000 m³/h (250 - 2400 cfm).

NCF, Nederman Central Fans with capacities for industrial process ventilation systems

Beside the N series fans Nederman offers centrifugal fans for larger industrial applications. The NCF series fans are from 2.2 kW to 18.5 kW (0,5 Hp to 3,0 Hp) and have an airflow capacity of up to 18 000 m³/h (10 500 cfm). They are powerful fans with a robust construction of welded steel manufactured to withstand industrial operation.

NCF DX fans for explosive applications

NCF DX is a series of explosion proof central fans designed to suit Nederman's FilterMax DX programme or similar systems. The NCF DX fans are approved for conductive dust in zone 22 in accordance with ATEX directive 94/9 group 2, category 3.



NCF Fan Sound Enclosures

The Sound Enclosures are designed for indoor and outdoor use and include fan, connections, vibration absorbers etc.



For further information please contact your local Nederman sales representative.
Also see the Nederman Design & Engineering Guide and www.nederman.com

Product availability may differ by country

Nederman N series Fans



The N series fan is an important component in Nederman's wide range of quality products for fume extraction and filtering, as well as for vehicle exhaust extraction. A range of fans are available from 0.55 kW to 2.2 kW (0.75 Hp to 3 Hp), both single and three phase.

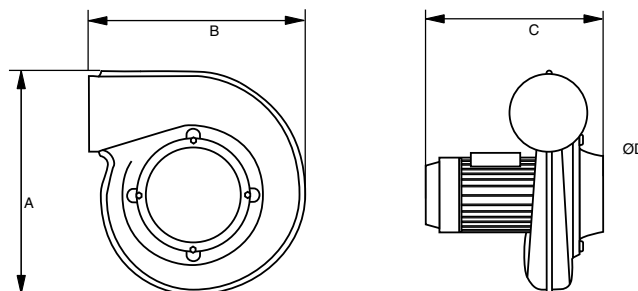
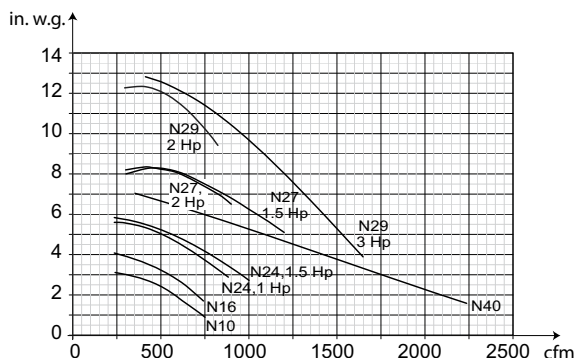
- Simple and powerful



| Dimensions | | | | |
|------------|----------|----------|----------|------------|
| Fan | A | B | C | D |
| N10 / N16 | 478 (18) | 457 (18) | 321 (13) | 160 (6.3) |
| N24 / N27 | 478 (18) | 457 (18) | 341 (13) | 160 (6.3) |
| N40 | 493 (19) | 582 (23) | 482 (19) | 250 (10) |
| N29 | 635 (25) | 643 (25) | 475 (19) | 160 (6.25) |

mm (inch)

Pressure drop



| Model | Airflow, m ³ /h (cfm) | Voltage, V | Frequency, Hz | Phase | Rated current, A | Power, kW (Hp) | Connection Ø in / out, mm (in.) | Weight, kg | Part no. |
|-------|----------------------------------|-----------------|---------------|-------|------------------|----------------|---------------------------------|------------|----------|
| N10 | 1250 (735) | 120 / 230 | 60 | 1 | 8.7 / 4.4 | 0.55 (0.75) | 160/160 (6 1/4 / 6 1/4) | 14 (30) | 14521421 |
| N10 | 1250 (735) | 230 / 460 | 60 | 3 | 2.46 / 1.4 | 0.55 (0.75) | 160/160 (6 1/4 / 6 1/4) | 14 (30) | 14521721 |
| N16 | 400-1200 (235-705) | 120 / 230 | 60 | 1 | 8.0/4.0 | 0.55 (0.75) | 160/160 (6 1/4 / 6 1/4) | 14 (30) | 14510321 |
| N16 | 500-1250 (290-735) | 230 / 460 | 60 | 3 | 2.4 / 1.4 | 0.55 (0.75) | 160/160 (6 1/4 / 6 1/4) | 14 (30) | 14511021 |
| N16 | 500-1250 (290-735) | 575 | 60 | 3 | 1.1 | 0.55 (0.75) | 160 / 160 (6 1/4 / 6 1/4) | 14 (30) | 14513021 |
| N24 | 400-1500 (235-880) | 120 / 230 | 60 | 1 | 10.0 / 5.0 | 0.75 (1) | 160/160 (6 1/4 / 6 1/4) | 17 (38) | 14510222 |
| N24 | 400-1750 (235-1030) | 208 / 230 / 460 | 60 | 3 | 3.6 / 3 / 1.8 | 0.75 (1) | 160/160 (6 1/4 / 6 1/4) | 17 (38) | 14514122 |
| N24 | 400-1750 (235-1030) | 208 / 230 / 460 | 60 | 3 | 4.9 / 4.6 / 2.3 | 0.9 (1.5) | 160/160 (6 1/4 / 6 1/4) | 17 (38) | 14511022 |
| N24 | 400-1750 (235-1030) | 575 | 60 | 3 | 1.5 | 0.9 (1.5) | 160/160 (6 1/4 / 6 1/4) | 17 (38) | 14511222 |
| N27 | 600-3000 (350-1750) | 120 / 230 | 60 | 1 | 14.2 / 7.1 | 0.9 (1.5) | 160/160 (6 1/4 / 6 1/4) | 17 (38) | 14510022 |
| N27 | 600-3000 (350-1750) | 230 | 60 | 1 | 11.6 | 1.5 (2.0) | 160/160 (6 1/4 / 6 1/4) | 17 (38) | 14514422 |
| N27 | 600-3000 (350-1750) | 208 / 230 / 460 | 60 | 3 | 6.5 / 6.2 / 3.4 | 1.5 (2.0) | 160/160 (6 1/4 / 6 1/4) | 17 (38) | 14514222 |
| N27 | 600-3000 (350-1750) | 575 | 60 | 3 | 2.2 | 1.5 (2.0) | 160/160 (6 1/4 / 6 1/4) | 17 (38) | 14514322 |
| N29 | 500-4000 (290-2350) | 208 / 230 / 460 | 60 | 3 | 6.5 / 6.2 / 3.4 | 1.5 (2.0) | 160/160 (6 1/4 / 6 1/4) | 32 (70) | 14521029 |
| N29 | 500-2500 (290-1470) | 208 / 230 / 460 | 60 | 3 | 8.6 / 7.6 / 3.8 | 2.2 (3.0) | 160/160 (6 1/4 / 6 1/4) | 28 (62) | 14510929 |
| N29 | 500-250 (290-1470) | 575 | 60 | 3 | 3.1 | 2.2 (3.0) | 160/160 (6 1/4 / 6 1/4) | 32 (70) | 14522129 |
| N40* | 500-3000 (290-1765) | 208 / 230 / 460 | 60 | 3 | 8.6 / 7.6 / 3.8 | 2.2 (3.0) | 200/250 (8 / 10) | 29 (64) | 14510223 |
| N40* | 500-3000 (290-1765) | 575 | 60 | 3 | 3.1 | 2.2 (3.0) | 200/250 (8 / 10) | 29 (64) | 14511723 |

*) Can not be used without connections, max. airflow is 2500 m³/h (1470 cfm)
Models with fan bracket also available.

For further information please contact your local Nederman sales representative.
Also see the Nederman Design & Engineering Guide and www.nederman.com

Product availability may differ by country

Portable Fans



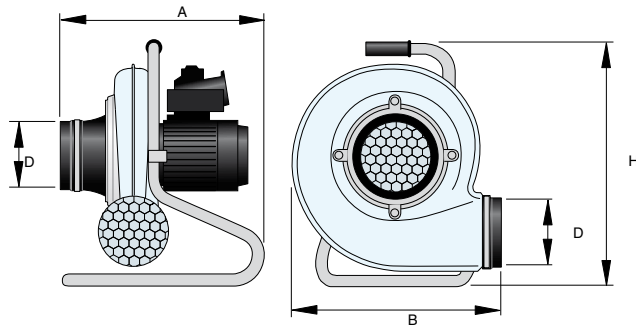
Nederman portable fan is a simple and powerful ventilation unit for service, repair and other temporary work. Ideal as an extractor for welding fumes, steam, dust or for providing fresh air during work in confined and enclosed spaces. A compact and easy to use fan which, in combination with inlet and outlet connections, makes a flexible and versatile unit with a wide range of applications.

- Compact and easy to use
- Stand included, wheel set as accessory
- On/off switch and motor protector included
- Robust and powerful



| Dimensions | | | | |
|------------|----------|----------|---------------|----------|
| Fan | A | B | D | H |
| N24 | 430 (17) | 484 (19) | Ø 160 (6 1/4) | 550 (22) |

mm (inch)



| Model | Airflow, m ³ /h (cfm) | Voltage, V | Frequency, Hz | Phase | Rated current, A | Power, kW (Hp) | Connection Ø in/out, mm (in.) | Weight, kg (lbs.) | Part no. |
|-------|----------------------------------|------------|---------------|-------|------------------|----------------|-------------------------------|-------------------|----------|
| N24 | 500 -1500 (300 - 900) | 120 V | 60 | 1 | 10.0 | 0.75 (1.0) | 160/160 (6 1/4 / 6 1/4) | 17 (38) | 14512422 |

| Accessories | Part no. |
|--|----------|
| Hose and nozzle kit for N16/N24 portable fans. Kit includes 100 mm (4 inch) plastic welding nozzle (Part no. 14501226) 5 m (16 ft.) of 160 mm (6 1/4 in.) 5 m (16 ft.) of 100 mm (4 in.) hose and a 160-100 mm (6 1/4-4 in.) reducer | 14346590 |
| Wheel set for N16 or N24 portable fan | 14371707 |

Nederman also offers Fan Inverters and large capacity NCF fans.
For information about these products, please see the Nederman Design Guide,
or visit www.nederman.com, or contact your nearest Nederman dealer.

Product availability may differ by country

Fan Manual Starter



A series of Fan Starters suitable for N-Series, smaller NCF-Series Fans and NOM Filters.

- Lockable on/off switch
- Motor overload protector included
- Both for single and three phase fans

| Model | Rated current, A | 1 phase 110 V | 1 phase 230 V | 3 phase 230 V | 3 phase 400 V | 3 phase 575 V | Part no. |
|---------------|------------------|--------------------|--------------------|-------------------------------------|--------------------------------------|------------------|----------|
| FMS 1-1.6 | 1-1.6 | | | | N10, N16, NOM4 | N16, N24 | 14502137 |
| FMS 1.6 - 2.5 | 1.6 - 2.5 | | | N10, N16, NOM4 | N24, NOM11, NOM18 | N27 | 14502237 |
| FMS 2.5 - 4 | 2.5 - 4 | | NOM4 | N24, NOM11 | N29/N40 - 1.5kW | N29, N40 | 14502337 |
| FMS 4 - 6.3 | 4 - 6.3 | NOM4 | N10, N16, NOM11 | N29/N40 - 1.5kW, NOM18 | N29/N40 - 2.2kW, NCF30/15, NOM 28 | | 14502437 |
| FMS 6.3 - 10 | 6.3 - 10 | N10, N16, NOM11 | N24, NOM18 | N29/N40 - 2.2kW, NCF30/15, NOM28 | NCF30/25 | | 14502537 |
| FMS 10 - 16 | 10 - 16 | N24, NOM18 | | NCF30/25 | (NCF40/25) | | 14502637 |
| FMS 14.5 - 19 | 14.5 - 19 | | | | | | 14503037 |
| FMS 18 - 25 | 18 - 25 | | | | | | 14503137 |

Fan Contactor



To start/stop a central fan in combination with a number of Motor Dampers. (Larger capacity fans may be remote controlled via a Nederman Fan Starter or Fan Inverter.) The Fan Contactor has a fan motor protection included. Protection class IP66. Coil 24V AC, from Operation Box or transformer.

| Model | Rated current, A | Phase | 110 V | 230 V | 400 V | 575 V | Part no. |
|--------------|------------------|-------|----------|---------------|---|---------------|----------|
| FC 3/1 - 2.9 | 1 - 2.9 | 3 | | N10, N16 | N10, N16, N24 | N26, N24 | 14514037 |
| FC 3/1.6 - 5 | 1.6 - 5 | 3 | | N24 | N24 | N27, N29, N40 | 14512937 |
| FC 3/3.7 - 9 | 3.7 - 9 | 3 | | N40 | N29 2.2 kW, N40 2.2 kW, NCF30/15, NCF30/25 | | 14513337 |
| FC 1/2 - 7 | 2 - 7 | 1 | | N10, N16, N24 | | | 14513837 |
| FC 1/5 - 12 | 5 - 12 | 1 | N10, N16 | | | | 14513937 |

Product availability may differ by country

Fan Controls



Less heated air is extracted to outside, and less electricity consumed if the fan operates only while the work is in progress. Switch on/off the fan manually at the hood, or automatically with a sensor clamp. Single phase power supply of the Operation Box. The automatic Fan Control has a sensor clamp to be attached on the ground cable of the welding set for automatic start of the fan. It is able to detect currents from 8A. The Operation Box consists of a transformer 30VA for the light kit in the extraction arm, a timer for delay of fan stop variable 0-5 minutes, and two separate connections for sensor clamps.

Manual

| Model | Rated current, A | Phase | 110 V | 230 V | 400 V | 575 V | Part no. |
|---------------|------------------|-------|---------------|---------------|--|---------------|----------|
| FCM 3/1 - 2.9 | 1 - 2.9 | 3 | | N10, N16 | N10, N16, N24 | N16, N24 | 14514337 |
| FCM 3/1.6 - 5 | 1.6 - 5 | 3 | | N24 | N24, N29, N40, NCF 30/15 | N27, N29, N40 | 14512837 |
| FCM 3/3.7 - 9 | 3.7 - 9 | 3 | | N40 | N29 2.2 kW, N40 2.2 kW, NCF 30/15, NCF 30/25 | | 14513237 |
| FCM 1/2 - 7 | 2 - 7 | 1 | | N10, N16, N24 | | | 14514437 |
| FCM 1/5 - 12 | 5 - 12 | 1 | N10, N16, N24 | | | | 14513637 |

Automatic

| Model | Rated current, A | Phase | 110 V | 230 V | 400 V | 575 V | Part no. |
|---------------|------------------|-------|---------------|---------------|--|---------------|----------|
| FCA 3/1 - 2.9 | 1 - 2.9 | 3 | | N10, N16 | N10, N16, N24 | N16, N24 | 14514137 |
| FCA 3/1.6 - 5 | 1.6 - 5 | 3 | | N24 | N24, N29, N40, NCF 30/15 | N27, N29, N40 | 14512737 |
| FCA 3/3.7 - 9 | 3.7 - 9 | 3 | | N40 | N29 2.2 kW, N40 2.2 kW, NCF30/15, NCF30/25 | | 14513137 |
| FCA 1/2 - 7 | 2 - 7 | 1 | | N10, N16, N24 | | | 14514237 |
| FCA 1/5 - 12 | 5 - 12 | 1 | N10, N16, N24 | | | | 14513537 |

| Accessory | Part no. |
|---|----------|
| Sensor clamp. One additional sensor clamp can be connected to the operation box. Used when using two different welding machines in the same area. | 14372199 |

Motor Damper



The Motor Damper consists of a Fan Contactor and an Operation Box that can be controlled by a closing contact. The Operation Box consists of a transformer 30VA for the light kit in the extraction arm, a timer for delay of fan stop variable 0-5 minutes, and two separate connections for sensor clamps. Single phase power supply, 110/120-220/240V, 50/60Hz.

The Motor Damper is available in two models: manual, using a hood mounted switch set, or automatic, using a sensor clamp on the welding set, for automatic start of the fan and automatic control of the damper.

- Provides optimum airflow within a multi-arm system
- Reduces energy consumption and increases efficiency
- Makes it possible to use a smaller fan and automatic start/stop

Manual

| Model | Ø, mm (in.) | Part no. |
|---------|-------------|----------|
| MDM 125 | 125 (5) | 14500191 |
| MDM 160 | 160 (6 1/4) | 14500291 |
| MDM 200 | 200 (8) | 14500391 |

| Accessory | Part no. |
|---|----------|
| Sensor clamp. One additional sensor clamp can be connected to the operation box. Used when using two different welding machines in the same area. | 14372199 |

Automatic

| Model | Ø, mm (in.) | Part no. |
|---------|-------------|----------|
| MDA 125 | 125 (5) | 14500491 |
| MDA 160 | 160 (6 1/4) | 14500591 |
| MDA 200 | 200 (8) | 14500691 |

Transformers

1

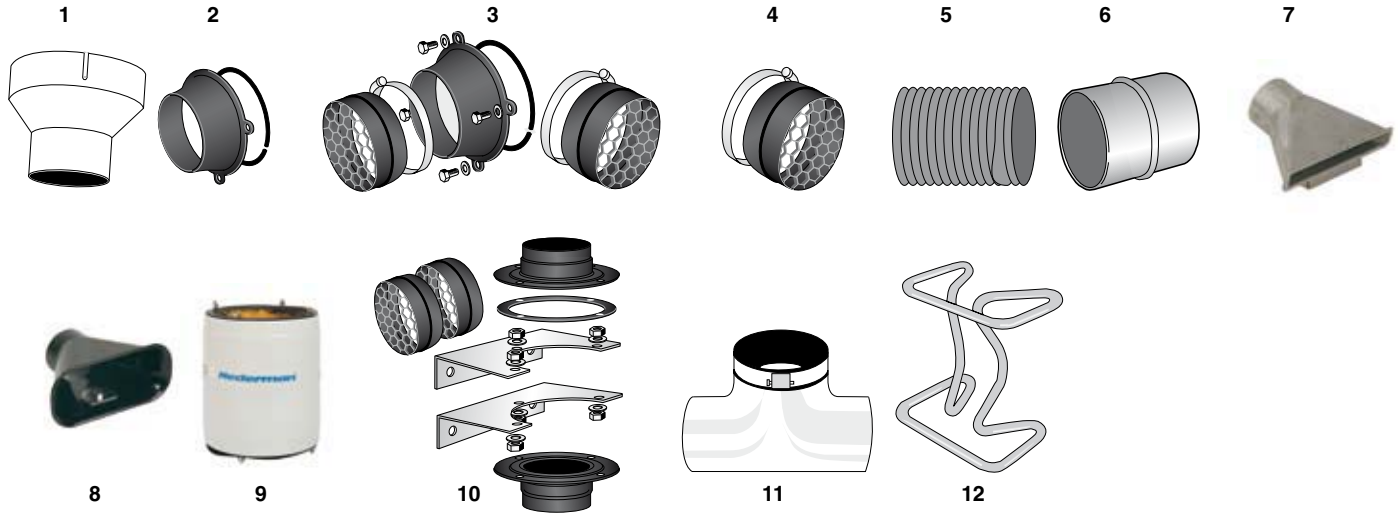
2



| | Description | Input voltage, V | Input frequency, Hz | Input phase | Output | No. of light kits | Part no |
|---|------------------------------------|------------------|---------------------|-------------|----------|-------------------|----------|
| 1 | Power supply to spotlight kits 24V | 230/250 | 50/60 | 1 | 24V 35VA | 1x20W | 10363189 |
| 2 | Power supply to spotlight kits 24V | 230/250 | 50/60 | 1 | 24V 75VA | 3x20W | 10361560 |

Product availability may differ by country

Accessories for Fans



| | Description | Part no. |
|----|---|----------|
| 1 | Adaptor Ø125/Ø100 mm (5 in. to 4 in.) | 14341077 |
| 1 | Adaptor Ø125/Ø75 mm (5 in. to 3 in.) | 14341080 |
| 1 | Adaptor int. Ø160/ext. (6 1/4 in.) Ø75 mm (3 in.) | 14510426 |
| 1 | Adaptor int. Ø160/ext. (6 1/4 in.) Ø100 mm (4 in.) | 14510526 |
| 1 | Adaptor int. Ø160/ext. (6 1/4 in.) Ø125 mm (5 in.) | 14510626 |
| 1 | Adaptor Ø150 (6 in.) /Ø125 mm (5 in.) | 14511126 |
| 1 | Adaptor Ø160 (6 1/4 in.) /Ø150 mm (6 in.) | 14511226 |
| 2 | Inlet adaptor for hose Ø160 mm (6 1/4 in.) for fan N10/N16/N24 | 14510326 |
| 3 | Inlet adaptor for hose Ø160 mm (6 1/4 in.) and two guard nets for fan N10/N16/N24 | 14322166 |
| 4 | Guard net, 1 pc, for fan N10/N16/N24 | 14333181 |
| 5 | Hose. L = 5 m. (16 ft.) Ø100 mm. (4 in.) PVC. Black | 10500427 |
| 5 | Hose. L = 5 m. (16 ft.) Ø125 mm. (5 in.) PVC. Black | 10500527 |
| 5 | Hose. L = 5 m. (16 ft.) Ø150 mm. (6 in.) PVC. Black | 10500627 |
| 5 | Hose. L = 5 m. (16 ft.) Ø160 mm. (6 1/4 in.) PVC. Black | 10511026 |
| 6 | Jointing tube Ø 75 - 75 mm (3 - 3 in.) | 14503626 |
| 6 | Jointing tube Ø 100 - 100 mm (4 - 4 in.) | 14504626 |
| 6 | Jointing tube Ø 125 - 125 mm (5 - 5 in.) | 14505626 |
| 6 | Jointing tube Ø 150 - 150 mm (6 - 6 in.) | 14506626 |
| 6 | Jointing tube Ø160-Ø160 mm (6 1/4 in. - 6 1/4 in.) | 14511326 |
| 7 | Nozzle with magnet. 250 x 30 mm. (10 x 1 1/4 in.) Aluminium. Ø100 mm (4 in.) | 14500226 |
| 8 | Nozzle with magnet. 260 x 100 mm. (10 x 4 in.) Polycarbonate. Ø100 mm (4 in.) | 14501226 |
| 9 | Silencer for fan when mounting on Original/Telescopic | 14502126 |
| 9 | Silencer including quick release (for fan mounting on FilterBox) | 14502226 |
| 10 | Wallbracket for silencer | 14343089 |
| 11 | Split intake Ø125 int. (5 in.) /2 x Ø100 mm (4 in.) ext. | 14500526 |
| 11 | Split intake Ø125 int. (5 in.) /2 x Ø125 mm (5 in.) ext. | 14500726 |
| 11 | Split intake Ø125 int. (5 in.) /2 x Ø75 mm (3 in.) ext. | 14500826 |
| 11 | Split intake Ø160 int. (6 1/4 in.) /2 x Ø100 mm (4 in.) ext. | 14510726 |
| 11 | Split intake Ø160 int. (6 1/4 in.) /2 x Ø125 mm (5 in.) ext. | 14510826 |
| 11 | Split intake Ø160 int. (6 1/4 in.) /2 x Ø75mm (3 in.) ext. | 14510926 |
| 12 | Support bracket for N10/N16/N24 for fixed mounting | 14510126 |
| 12 | Support bracket for N40 for fixed mounting | 14510226 |
| 12 | Support bracket for portable N16/N24 fan | 14511426 |
| 12 | Support bracket for fan N29 | 14321745 |

Product availability may differ by country